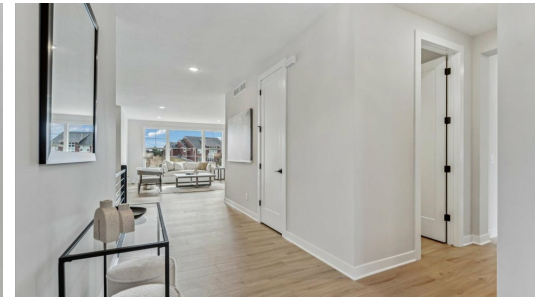
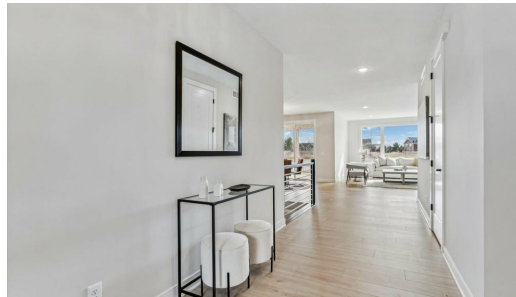
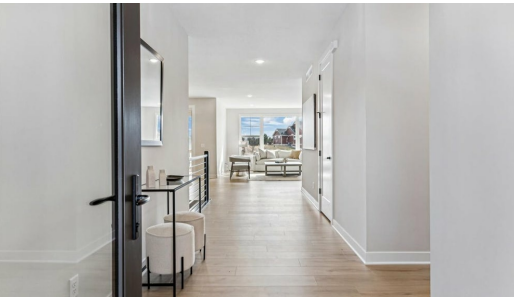




Pending



Step into the Custom

Come home to a beautiful custom walkout rambler! Set on a 1+ acre lot, enjoy the sprawling views, functional yard space, and privacy inside and out. The main level features 3 bedrooms, 3 bathrooms, gourmet kitchen, and spacious screen porch. The would out basement features a 2nd living space and 4th bedroom and bathroom. You'll love the oversized 3-car garage and curb appeal of this unique property. Located in the Hills of Troy Community offering miles of private trails and other shared amenities. Minutes from all the everyday amenities including ...

ADDRESS

719 Mount Curve
Chase
Hudson , WI 54016

COMMUNITY


Hills of Troy


FLOORPLAN

Custom


PLAN DETAILS

 4 Bedroom

 4 Baths

 3 Car Garage

 1 Stories

 3,376 Sq.Ft.