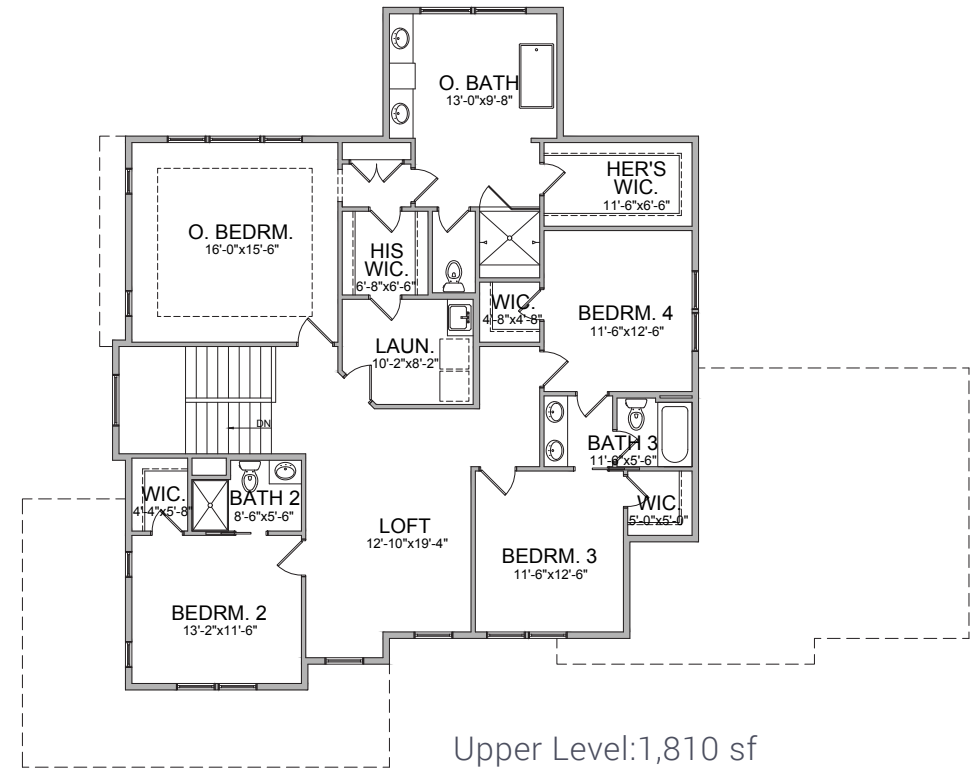
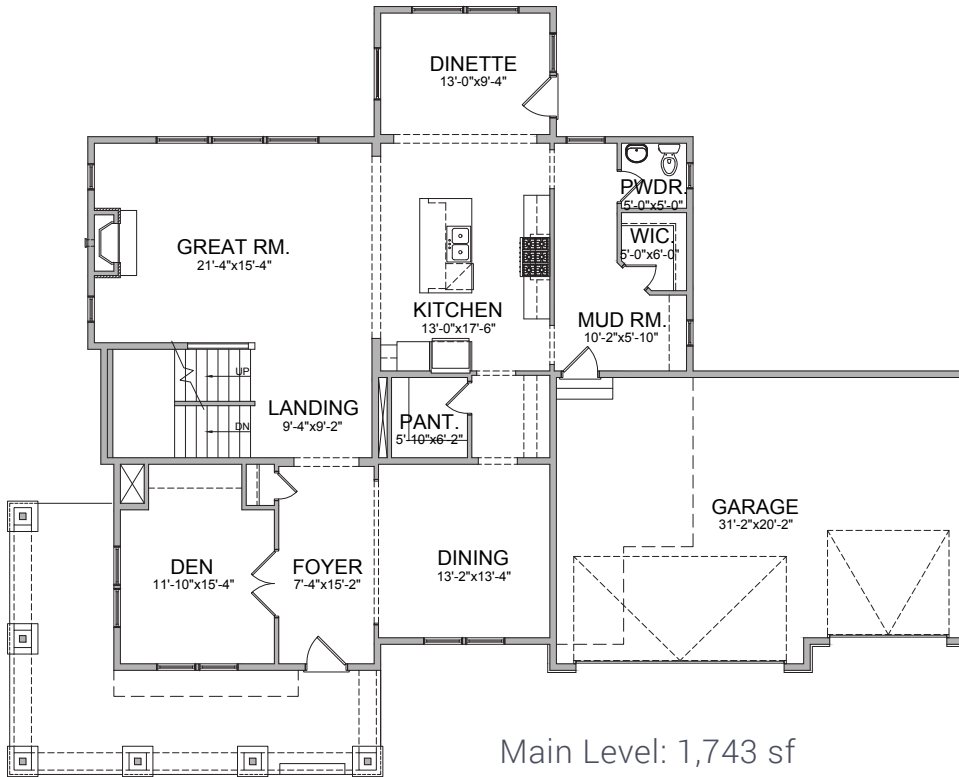


FLOOR PLANS



REMINGTON

4-5 Bedrooms | 3.5-4.5 Baths | 3-Car Garage | 3,553-5,029 sf

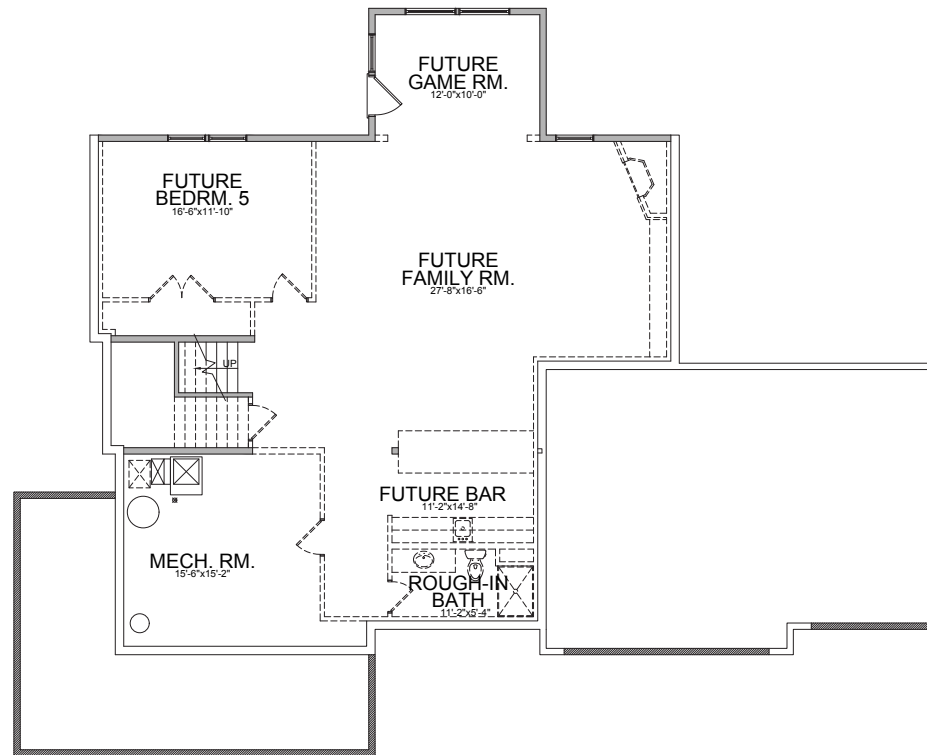


All prices, promotions, features, options, amenities, floor plans, elevations, materials and dimensions are subject to change without notice. All information is deemed reliable but not guaranteed. Please ask the new home specialist for more information. ©2017 Creative Homes, Inc. MN Builder License #BC667667. WI Builder License #1248864.



FLOOR PLANS

REMINGTON LOWER LEVEL



Optional
Lower Level: 1,476 sf

All prices, promotions, features, options, amenities, floor plans, elevations, materials and dimensions are subject to change without notice. All information is deemed reliable but not guaranteed. Please ask the new home specialist for more information.
©2017 Creative Homes, Inc. MN Builder License #BC667667. WI Builder License #1248864.

