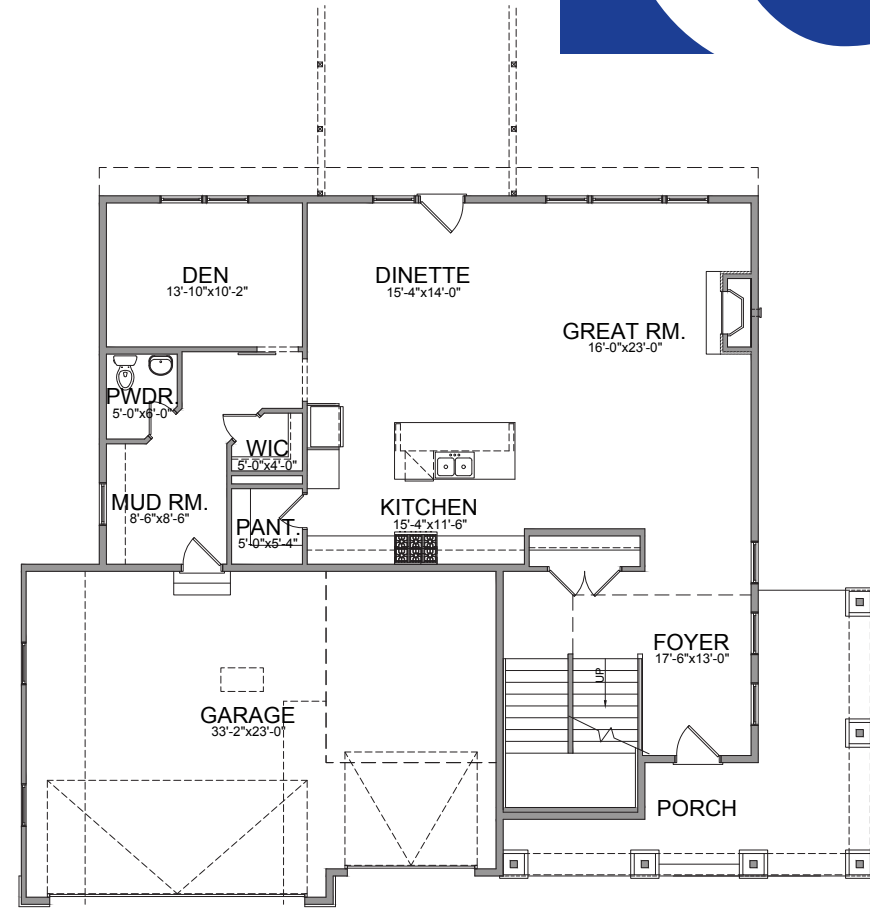
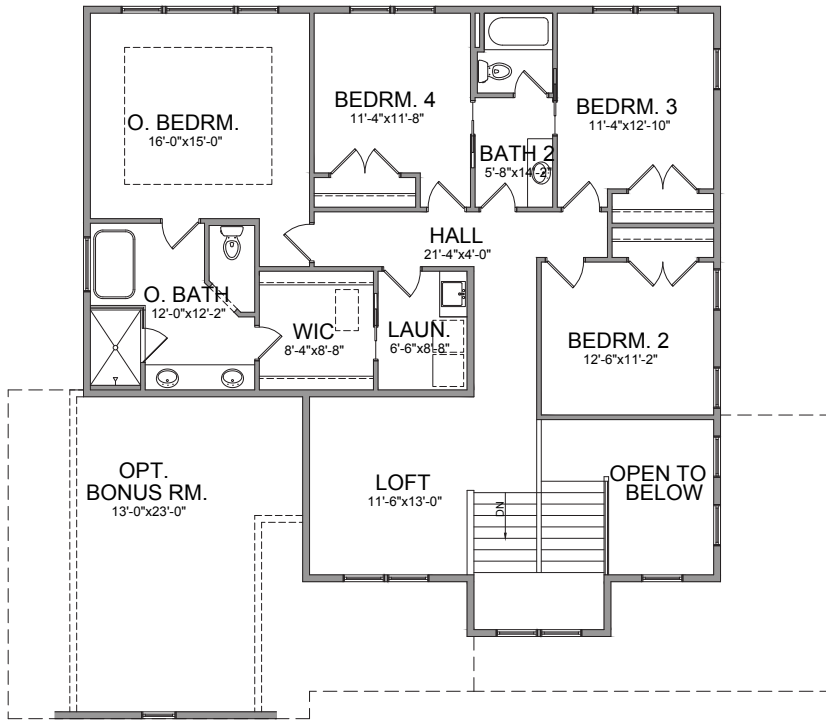


FLOOR PLANS



FREMONT

4-5 Bedrooms | 2.5-3.5 Baths | 3-Car Garage | 3,074-4,465 sf



All prices, promotions, features, options, amenities, floor plans, elevations, materials and dimensions are subject to change without notice.

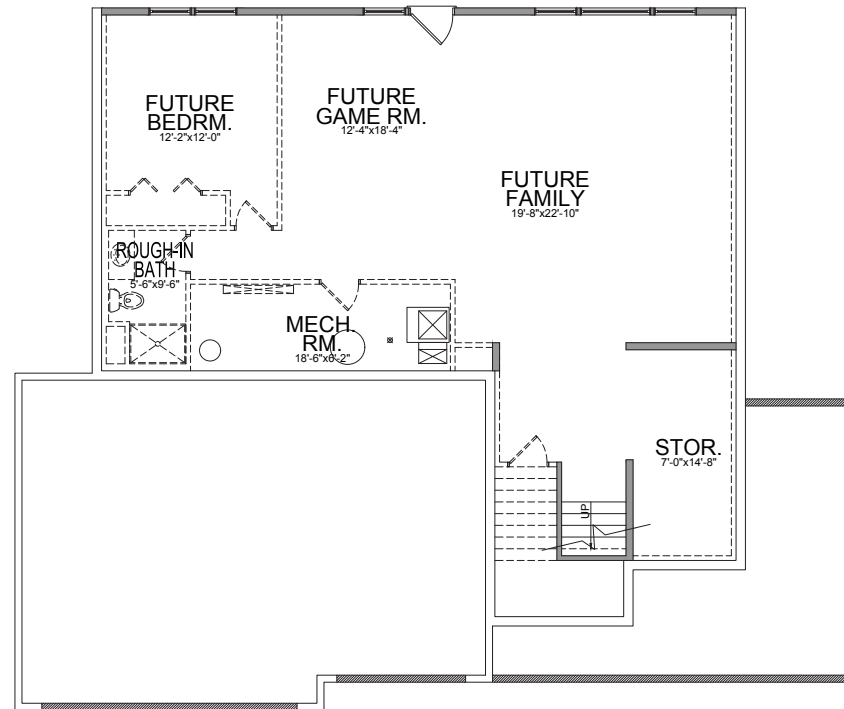
All information is deemed reliable but not guaranteed. Please ask the new home specialist for more information.

©2017 Creative Homes, Inc. MN Builder License #BC667667. WI Builder License #1248864.



FLOOR PLANS

FREMONT LOWER LEVEL



Optional
Lower Level: 1,391 sf

All prices, promotions, features, options, amenities, floor plans, elevations, materials and dimensions are subject to change without notice,
All information is deemed reliable but not guaranteed. Please ask the new home specialist for more information.
©2017 Creative Homes, Inc. MN Builder License #BC667667. WI Builder License #1248864.

