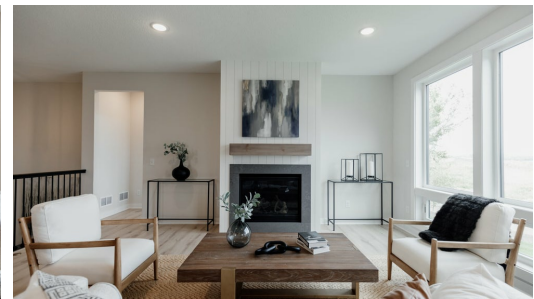
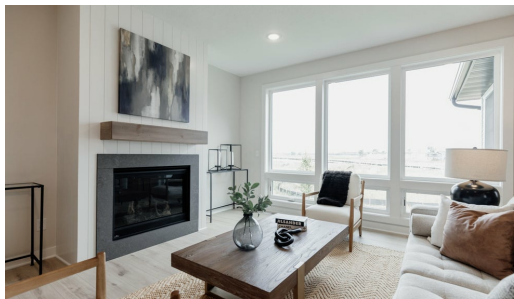


Available August 2024



## Step into the Riley

Personalize this Riley now! A stunning open concept home with everything you need on the main level. The primary suite has convenient access to the laundry room and mud room through the spacious walk-in closet. The basement is a spacious area to do as you please with this plan.

### ADDRESS

 2133 Wespointe Dr  
 Hastings , MN 55033

### PRICE

\$559,900

### COMMUNITY

Heritage Ridge Villas

### FLOORPLAN

Riley

### PLAN DETAILS

2 Bedroom

3 Baths

2 Car Garage

1 Stories

2,738 Sq.Ft.